



# 4 The Camera

## CAMERAS AND THEIR PARTS

Activity A  
Chapter 4

Name \_\_\_\_\_  
Date \_\_\_\_\_ Period \_\_\_\_\_

Carefully read the chapter. Then complete the following statements about cameras and their parts.

1. A \_\_\_\_\_ is a light-tight box made to expose light-sensitive material (film). 1. \_\_\_\_\_
2. A \_\_\_\_\_ is a device something like a window blind that controls the length of exposure. 2. \_\_\_\_\_
3. When the shutter is opened, \_\_\_\_\_ passes through the lens and focuses on the film. 3. \_\_\_\_\_
4. The \_\_\_\_\_ controls the amount of light admitted into the camera. 4. \_\_\_\_\_
5. The diaphragm, also called an \_\_\_\_\_ (opening), is usually found between the lens elements. 5. \_\_\_\_\_
6. The \_\_\_\_\_ controls the direction of the light coming into the camera. 6. \_\_\_\_\_
7. Name the two basic types of shutters. 7. \_\_\_\_\_  
\_\_\_\_\_
8. Which shutter speed would you use to stop the action of a runner?  
1 second      1/8 second      1/500 second 8. \_\_\_\_\_
9. Shutter speeds of \_\_\_\_\_ second or faster are needed when the camera is hand held using a normal lens. 9. \_\_\_\_\_
10. The photographer uses the \_\_\_\_\_ to aim and compose the picture. 10. \_\_\_\_\_
11. The \_\_\_\_\_ opens the shutter and exposes the film. 11. \_\_\_\_\_
12. In which of the following camera modes of operation is the lens aperture and shutter speed set by hand:  
a. Automatic.  
b. Manual.  
c. Automatic focusing. 12. \_\_\_\_\_

The Camera

11.10

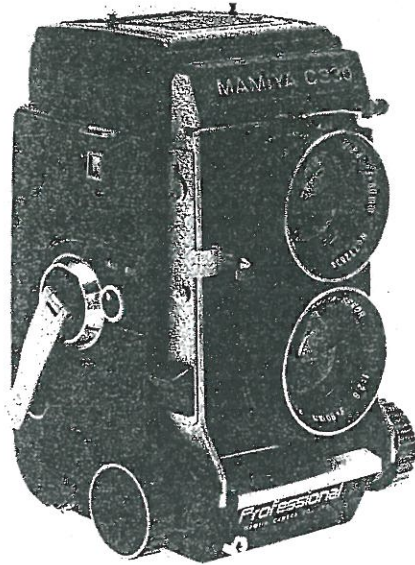
- 13. In automatic programmed systems, the camera selects both shutter speed and aperture opening. (True or False) 13. \_\_\_\_\_
- 14. List the five basic types of cameras. 14. \_\_\_\_\_  
\_\_\_\_\_  
\_\_\_\_\_  
\_\_\_\_\_  
\_\_\_\_\_
- 15. To use a \_\_\_\_\_ camera, you just aim and shoot. 15. \_\_\_\_\_
- 16. The \_\_\_\_\_ camera uses a viewfinder combined with a focusing device called a rangefinder. 16. \_\_\_\_\_
- 17. \_\_\_\_\_ error means that the viewfinder sees the subject from a slightly different position than the lens. 17. \_\_\_\_\_
- 18. The \_\_\_\_\_ camera has a two-section body fitted with a pair of matched lenses. Composing and focusing are done with the top lens. The bottom lens takes the picture. 18. \_\_\_\_\_
- 19. The \_\_\_\_\_ camera uses the same lens for viewing, focusing, and taking the picture. 19. \_\_\_\_\_
- 20. Single lens reflex cameras are made in several \_\_\_\_\_. The most popular is the 35 mm. 20. \_\_\_\_\_
- 21. \_\_\_\_\_ cameras are used when large format negatives are needed. Because of its size, it must always be mounted on a tripod. 21. \_\_\_\_\_
- 22. The main advantage of a \_\_\_\_\_ camera is its ability to take medium and large format pictures in fast-moving situations. 22. \_\_\_\_\_
- 23. The \_\_\_\_\_ camera is designed for wet environments. 23. \_\_\_\_\_
- 24. Still \_\_\_\_\_ cameras record pictures on an electronic medium. 24. \_\_\_\_\_
- 25. The \_\_\_\_\_ camera is named for its unusual film cartridge. 25. \_\_\_\_\_

# TYPES OF CAMERAS

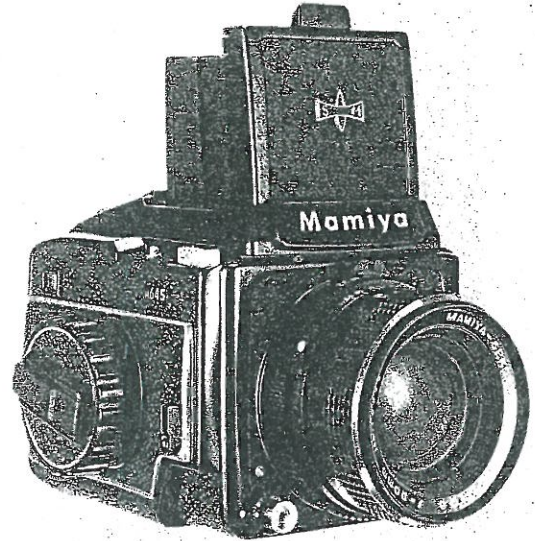
Activity B  
Chapter 4

Name \_\_\_\_\_  
Date \_\_\_\_\_ Period \_\_\_\_\_

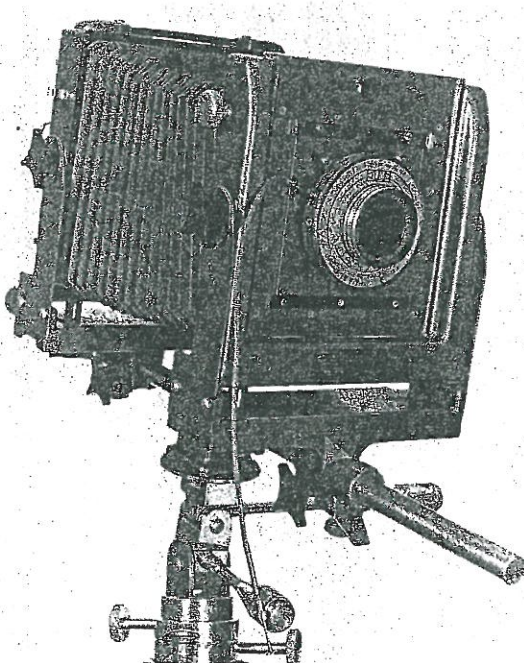
Identify the following cameras according to type.



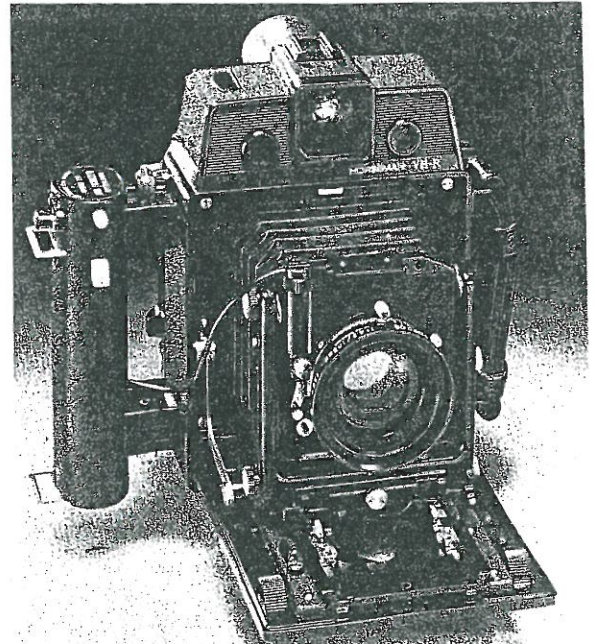
1. \_\_\_\_\_



2. \_\_\_\_\_



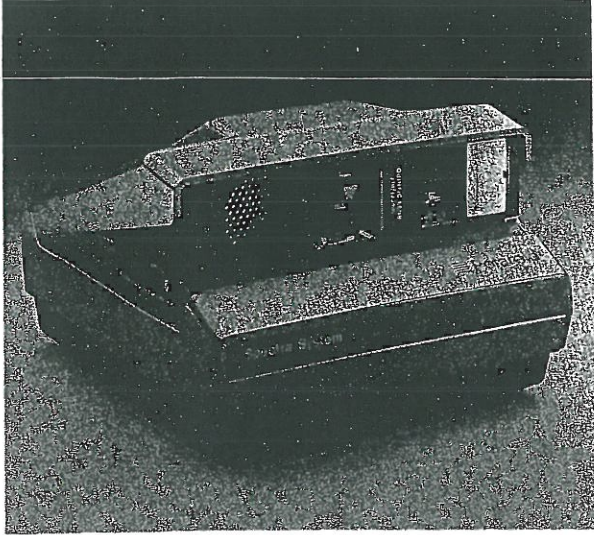
3. \_\_\_\_\_



4. \_\_\_\_\_



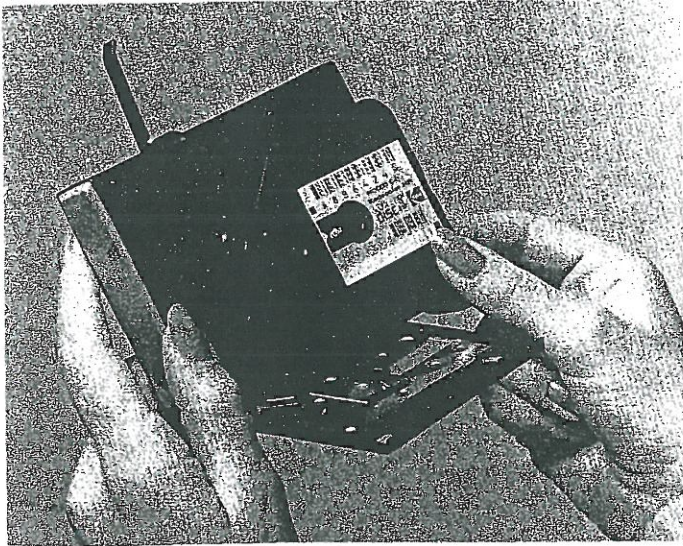
The Camera



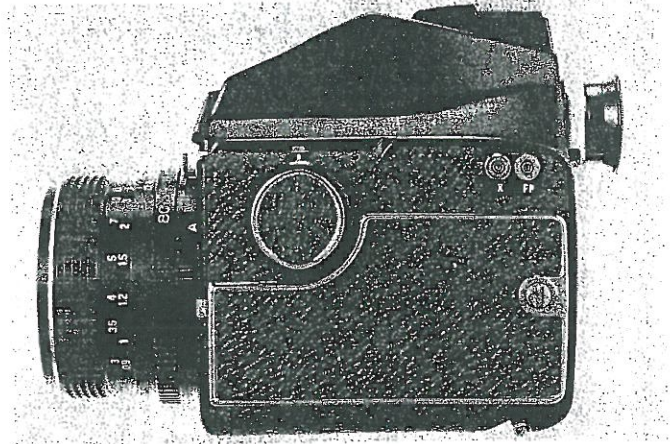
5. \_\_\_\_\_



6. \_\_\_\_\_



7. \_\_\_\_\_



8. \_\_\_\_\_



9. \_\_\_\_\_



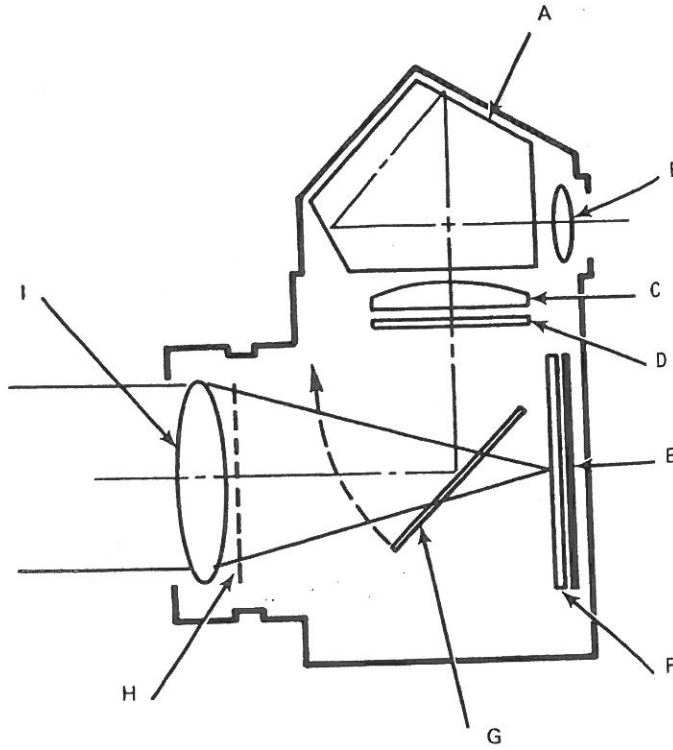
10. \_\_\_\_\_

# BASIC CAMERA PARTS IDENTIFICATION

Activity C  
Chapter 4

Name \_\_\_\_\_  
Date \_\_\_\_\_ Period \_\_\_\_\_

Identify the basic parts of the camera indicated below.



- |          |          |
|----------|----------|
| A. _____ | F. _____ |
| B. _____ | G. _____ |
| C. _____ | H. _____ |
| D. _____ | I. _____ |
| E. _____ |          |

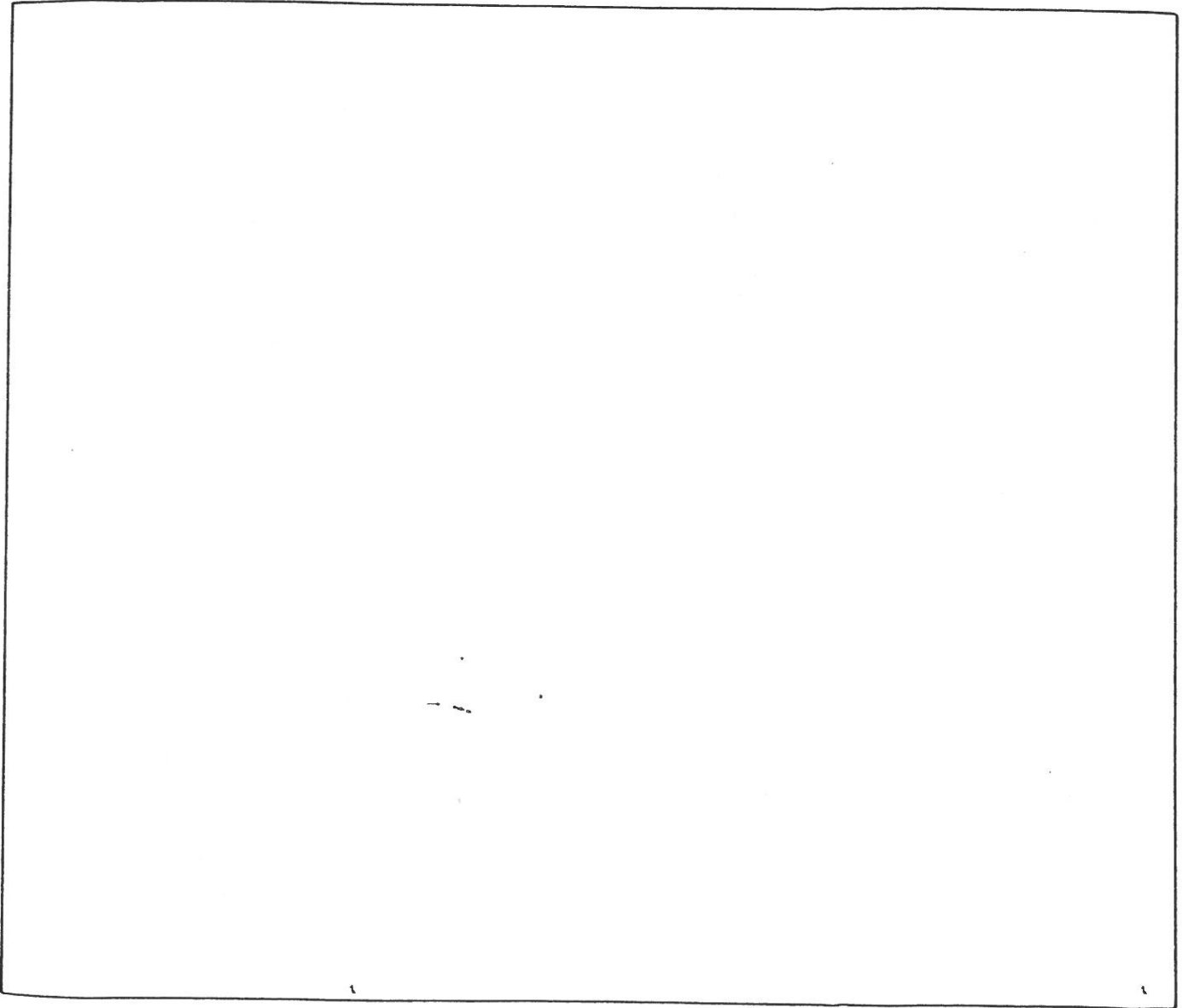
# YOUR CAMERA

Activity D  
Chapter 4

Name \_\_\_\_\_  
Date \_\_\_\_\_ Period \_\_\_\_\_

Make a sketch of your camera (or the camera you will be using for this course). Label as many parts as possible. Then fill in the following information about the camera.

Sketch:



Camera type: \_\_\_\_\_

Camera brand and model: \_\_\_\_\_

Shutter type: \_\_\_\_\_

Shutter speed range: \_\_\_\_\_

Mode of operation: \_\_\_\_\_

Format: \_\_\_\_\_